



Life Span and Reproduction of Green Mice

RBRC00267 C57BL/6-Tg(CAG-EGFP)CI4-Y0I-FMI3IOsb

17-Non-2011

Mortality Rate

Female 31.3% (20/64)

Male 0% (0/59)

Survival Curve

Kaplan-Meier method

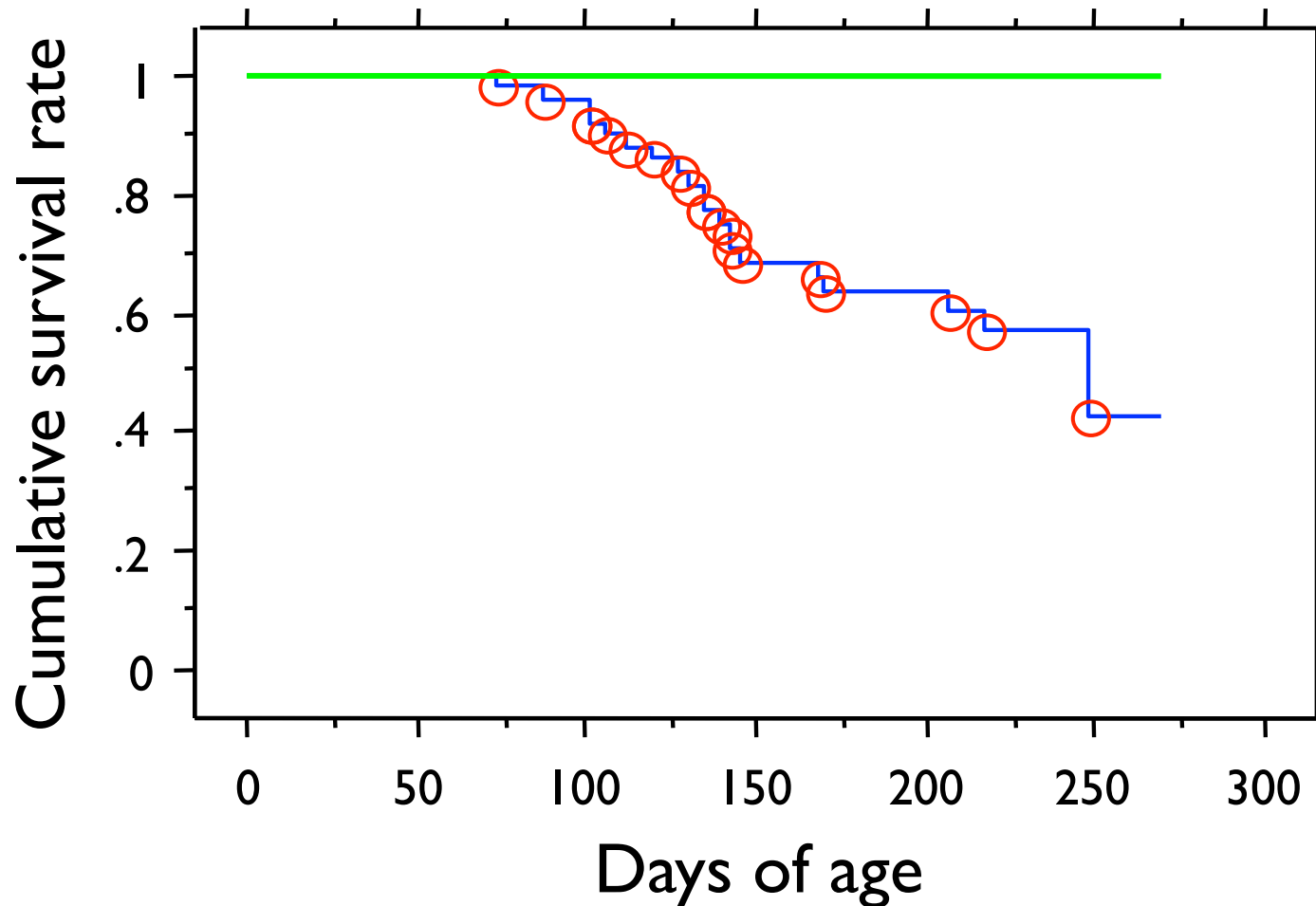
Cumulative survival rate curve: survival days

Censor variable: death / retire

Grouping variable; sex

— Cumulative survival rate (female)

— Cumulative survival rate (male)



Date of Death

Sex	Mean \pm SEM (range)
Female	140 \pm 9.8 days (73-248 days), n=20
Male	No death, n=59



Reproductive Performance

1) Infertility Rate	14.1% (9/64)
2) Pregnancy Rate	85.9% (55/64)

- 1) Number of females gave birth at least one time / Total number of females observed
- 2) Number of females never gave birth / Total number of females observed

Litter Size of Surviving Mothers

No. Litter	Litter size (mean \pm SEM)
1st	6.4 \pm 0.4 (2-10), n=41
2nd	6.8 \pm 0.5 (2-12), n=28
3rd	7.5 \pm 0.4 (3-10), n=21
4th	6.2 \pm 0.5 (2-9), n=16
5th	4.5 \pm 0.8 (1-8), n=11
6th	4.0, n=1
7th	9.0, n=1

Litter Size of Deceased Mothers

No. Litter	Litter size (mean \pm SEM)
1st	5.7 \pm 0.5 (2-10), n=17
2nd	6.6 \pm 0.6 (2-12), n=13
3rd	6.7 \pm 0.7 (3-10), n=6
4th	2.0, n=1
5th	5.0, n=1